

LIVESTREAM HOUR SEASON ONE FINALE

ADAPTING TO THE NEW SUPPLY CHAIN REALITY UPDATE FROM NORTH AMERICA

In Partnership



AUTOMOTIVE
FESTIVAL of TRANSFORMATION
SURVIVING AND THRIVING IN 2020

from

Automotive
LOGISTICS

&

ams

In Partnership



Today's Guests



Maxim Serov
Supply Chain
Director
North America
Benteler Group



Hector Martinez
Division Manager,
Export Sales & CBU
Logistics
Honda de Mexico



Host:
Christopher Ludwig,
Editor-in-Chief
Automotive Logistics
AMS

LIVESTREAM HOUR SEASON ONE FINALE

ADAPTING TO THE NEW SUPPLY CHAIN REALITY

**GLOBAL LOGISTICS LESSONS
WITH THE VOLKSWAGEN GROUP**

In Partnership



AUTOMOTIVE
FESTIVAL of TRANSFORMATION
SURVIVING AND THRIVING IN 2020

from

**Automotive
LOGISTICS**

&

ams

[Catchup on part 1 here!](#)

AUTOMOTIVE LOGISTICS & SUPPLY CHAIN LIVE

2020

TUESDAY 15TH SEPTEMBER TO
THURSDAY 17TH SEPTEMBER

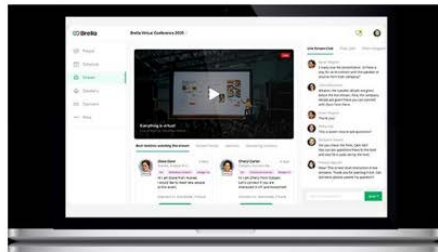
Automotive
LOGISTICS

HOW THE VIRTUAL CONFERENCE WORKS



VIRTUAL AGENDA

A virtual agenda, customisable to feature your own meetings and the ability to opt into any of the myriad panels offered up across each day.



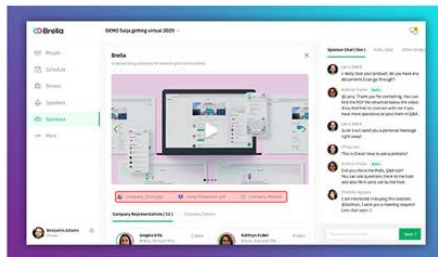
CONTENT LIVESTREAMS

Multiple Livestreams full of industry leading content and speakers discussing the current challenges and sharing the latest insights.



NETWORKING MATCHMAKER

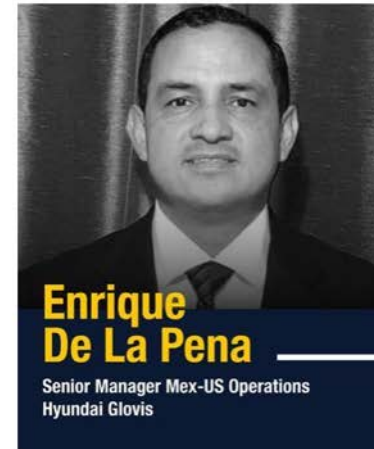
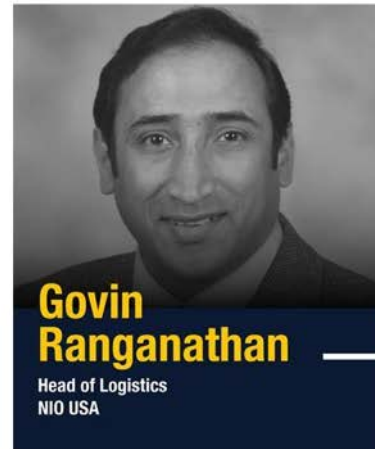
Brella's advanced AI based matchmaking will ensure you have no shortage of great connections to make



VIRTUAL EXHIBITION

Check out our virtual exhibition to meet and talk with massive companies and get their insights on our rapidly changing space.

[Learn more here...](#)



Global snapshots of the week



- Prospect of renewed lockdown in Catalonia, Belgium and restrictions in UK, France & Germany
- **Ford** Romania plant back to 3 shifts
- **Tesla** confirms it still plans local production of battery cells at new German factory
- **VW Group** opens industrial cloud to 3rd parties



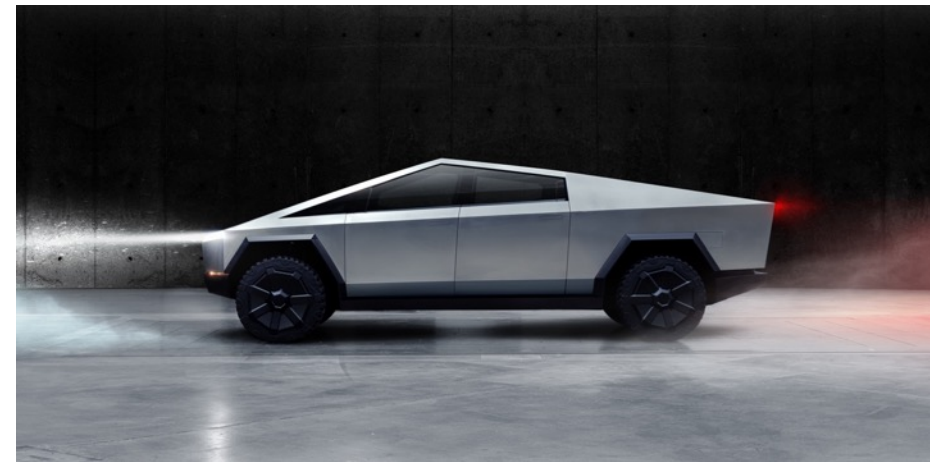
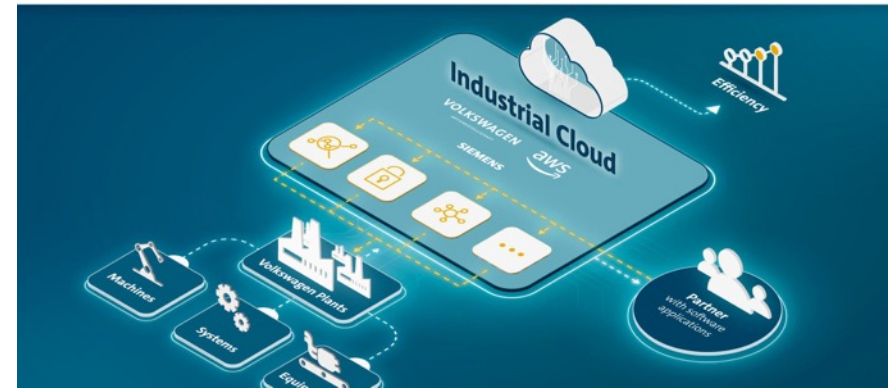
- **Tesla** to build plant for electric semi in Texas
- **Rivian** pilot production begins – but delays launch
- Intermodal rail delays, including at port of LA
- Blockades in Sonora state impacting import/export by rail and from port of Mazatlan – **Ford** impacted



- Container shipping schedules improving – but delays out of China still 4x higher vs 2019



- **Mitsubishi** reportedly will close plant in Japan in '23, focus on South-East Asia, pullout of Europe

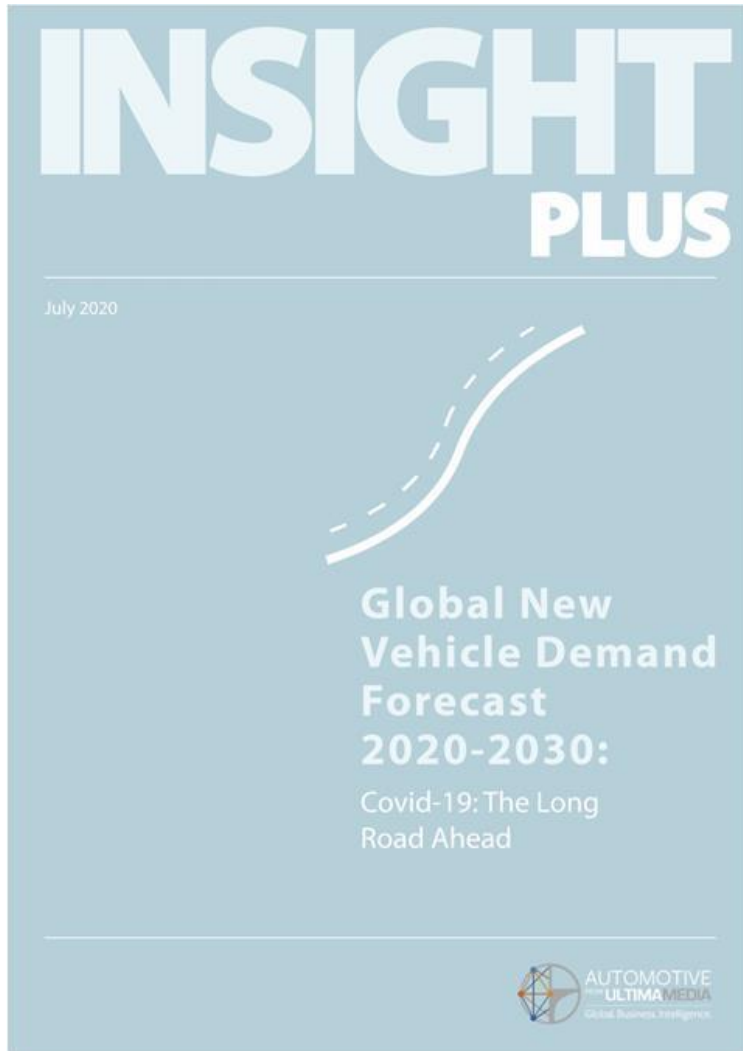


US total vehicle demand monthly 2020 forecast under 3 scenarios

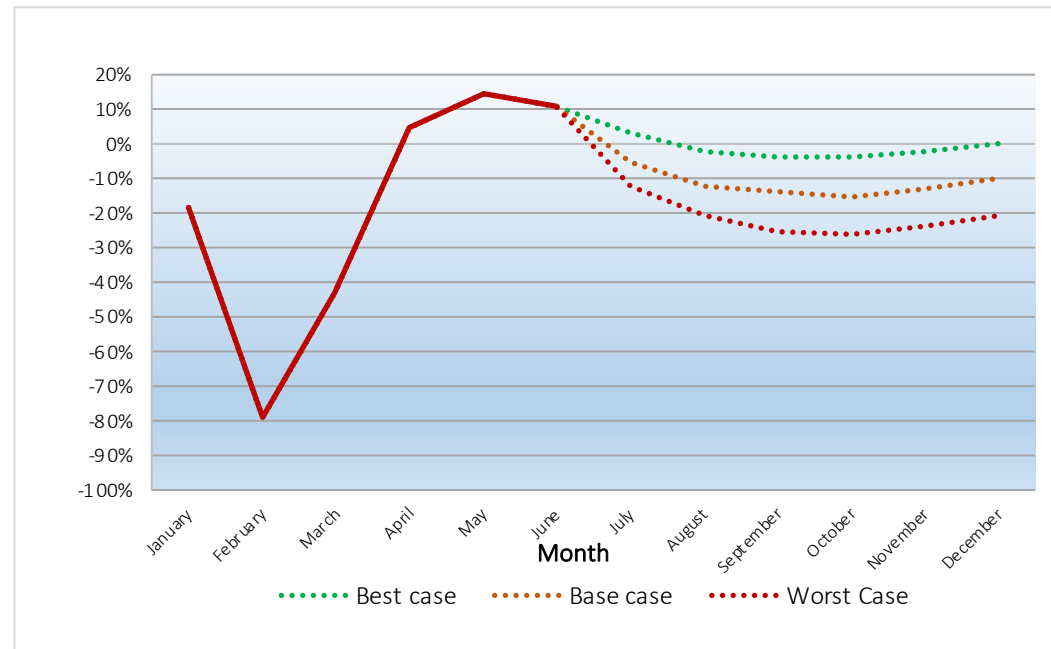
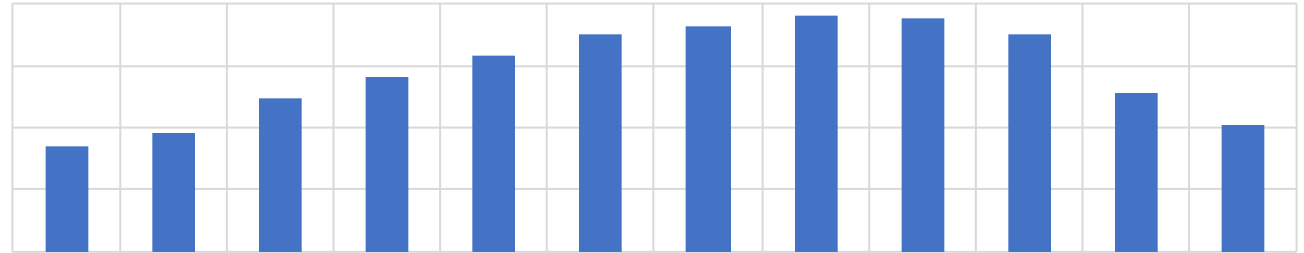
% fall	Jan	Feb	Mar	Apr	May	Jun	Jul	Aug	Sep	Oct	Nov	Dec	2020 fall %
Actual	+2%	+2%	-38%	-46%	-30%	-25%							
Best case							-15.0%	-5.0%	-2.0%	-5.0%	-8.0%	-10.0%	-15%
Base Case							-20.0%	-15.0%	-13.0%	-16.0%	-19.0%	-22.0%	-20%
Worst Case							-25.0%	-24.0%	-25.0%	-27.0%	-31.0%	-33.0%	-25%

Source: Automotive from Ultima Media

New global vehicle demand forecast and analysis report



Leading national market PC + CV Sales



£495/\$625/€550 ...purchase includes free pass to ALSC Live!

Updates and lessons from the North American supply chain

- Status of production and supply chain ramp ups a pandemic worsens





Supplier
capacity and
constraints




Logistics network impacts



Transport mode changes

Challenges in Mexico





EDI and scheduling





Optimising limited inventory levels

An aerial, top-down view of a road with two cars. The image is overlaid with a complex digital grid and glowing blue circular patterns, suggesting a digital or data-driven environment. The text 'Supply chain digitalisation' is centered in white.

Supply chain digitalisation

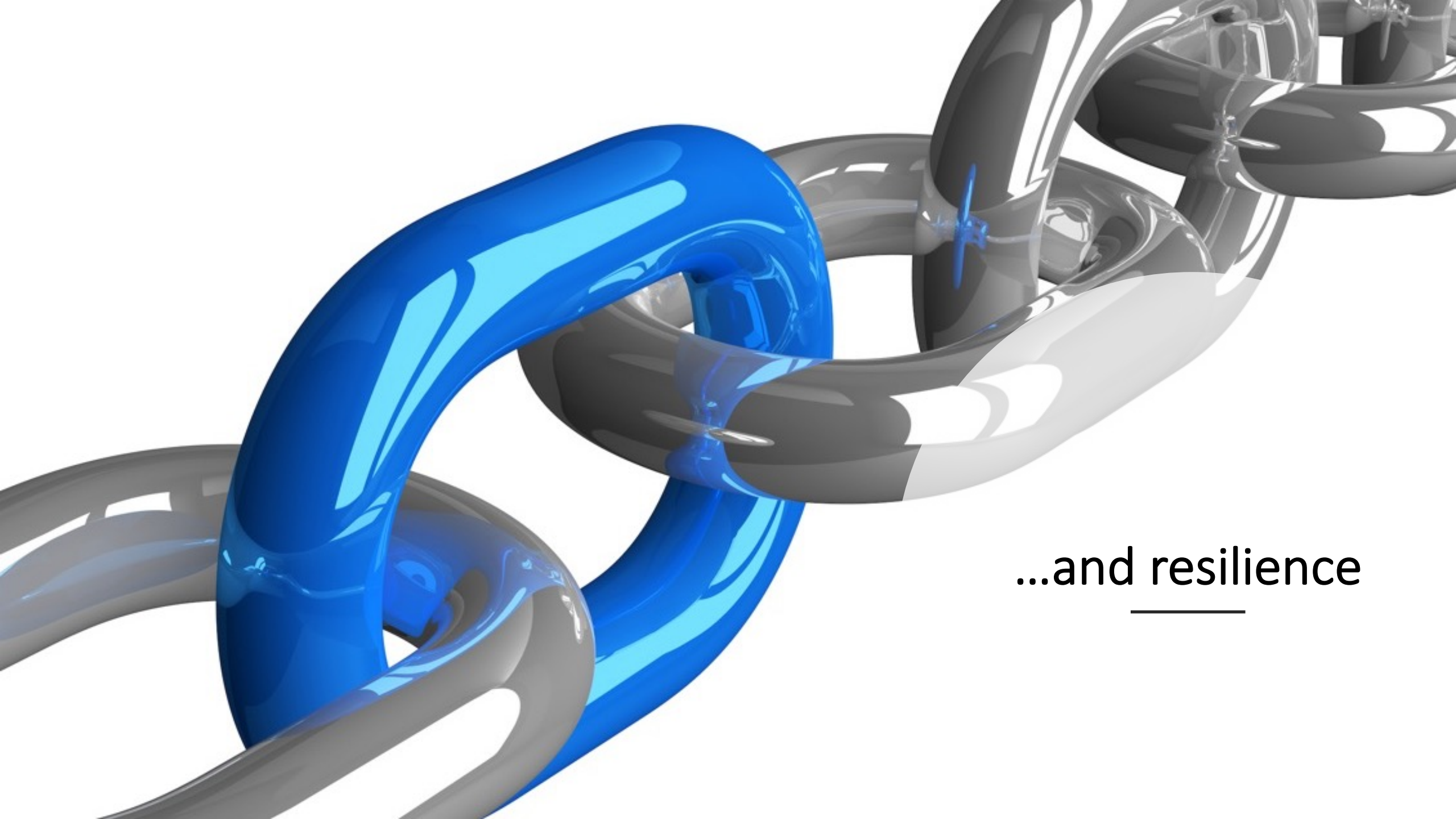


Fuelled by LNG

 **SIEM**
Car Carriers

SIEM CONFUCIUS

Supply chain sustainability



...and resilience



Maxim Serov, Supply Chain Director, North America, Benteler Group



Hector Martinez Division Manager, Export Sales & CBU Logistics **Honda de Mexico**

AFTER SHOW Q&A

LIVESTREAM HOUR

NORTH AMERICAN VEHICLE PORTS

In Partnership



AUTOMOTIVE
FESTIVAL of TRANSFORMATION
SURVIVING AND THRIVING IN 2020

from

**Automotive
LOGISTICS**

&

ams

[Watch the Q&A here!](#)

Thanks to all of our season 1 guests (Watch again here)



Jeffery Estes
Toyota North America



Ryan Grimm
Toyota North America



Michael Schad
Toyota North America



Dr Susanne Lehmann
Volkswagen North America



Lars Bäumann
Volkswagen



Matthias Braun
Volkswagen Group



Anu Goel
Volkswagen Group of America



Hector Martinez
Honda de Mexico



Amlan Bose
Ford India



Darren Acker
Hyundai Glovis



Charles Franklin
Hyundai Glovis



Albert Zapanta
US-Mexico Chamber of Commerce



Marko Weisshaar
INEOS Automotive



Justin Newell
Inform



Dan Gosson
Inform



Dr Wolfgang Hackenberg
Synaos



Fathi Tlatli
DHL Customer
Solutions & Innovation



Jasjit Sethi
TCI Supply Chain Solutions



Michael Maass
Kuehne + Nagel



Christopher J. Connor
American Association of Port
Authorities



Paul Nurse
ProAct



Mauricio Alcocer
CNW



Dr Payam Dehdari
University of Applied Science Stuttgart

Thanks to all of our season 1 guests (Watch again here)



Sunjay Kapur
Sona Comstar



Vikrampati Singhania
JK Fenner



Vinnie Mehta
ACMA



Matt Pohlman
Wabco / ZF



Liviu Bidian
LEONI



Maxim Serov
Benteler Group



Antonio Manuel Marcelo
Visteon



KV Praveen
Meritor



Arnd Franz
LKQ Europe



Dr Heike Schulze
CSR Europe



Bart Huthwaite, Jr.
EY



Frank Schlehuber
CLEPA



Kristin Diczek
Center for Automotive Research



Peter Weiss
Gartner



Wolfgang Lehmacher,
Supply Chain Strategist



Jürgen Schmelting
Fraunhofer ISST



Matteo Fini
IHS Markit



Christoph Stürmer
PwC



Ralf Bechmann
ROI Management Consulting



Marcus Williams
Automotive Logistics



Daniel Harrison
Automotive from Ultima Media



Nick Holt
AMS

SEASON TWO STARTS WITH OUR VIRTUAL CONFERENCE!

AUTOMOTIVE LOGISTICS & SUPPLY CHAIN LIVE

2020

TUESDAY 15TH SEPTEMBER TO
THURSDAY 17TH SEPTEMBER

Automotive
LOGISTICS

Thank you to all of our season 1 partners



And additional partners

Greener supply chain partner



North American Vehicle Port Partners



That's a wrap! See you next season



The Automotive Livestream hour is produced by:

Christopher Ludwig christopher.ludwig@ultimamedia.com

Neemish Ladwa: neemish.ladwa@ultimamedia.com

Richard Logan: richard.logan@ultimamedia.com

Automotive
LOGISTICS

Finished Vehicle
LOGISTICS

ams